

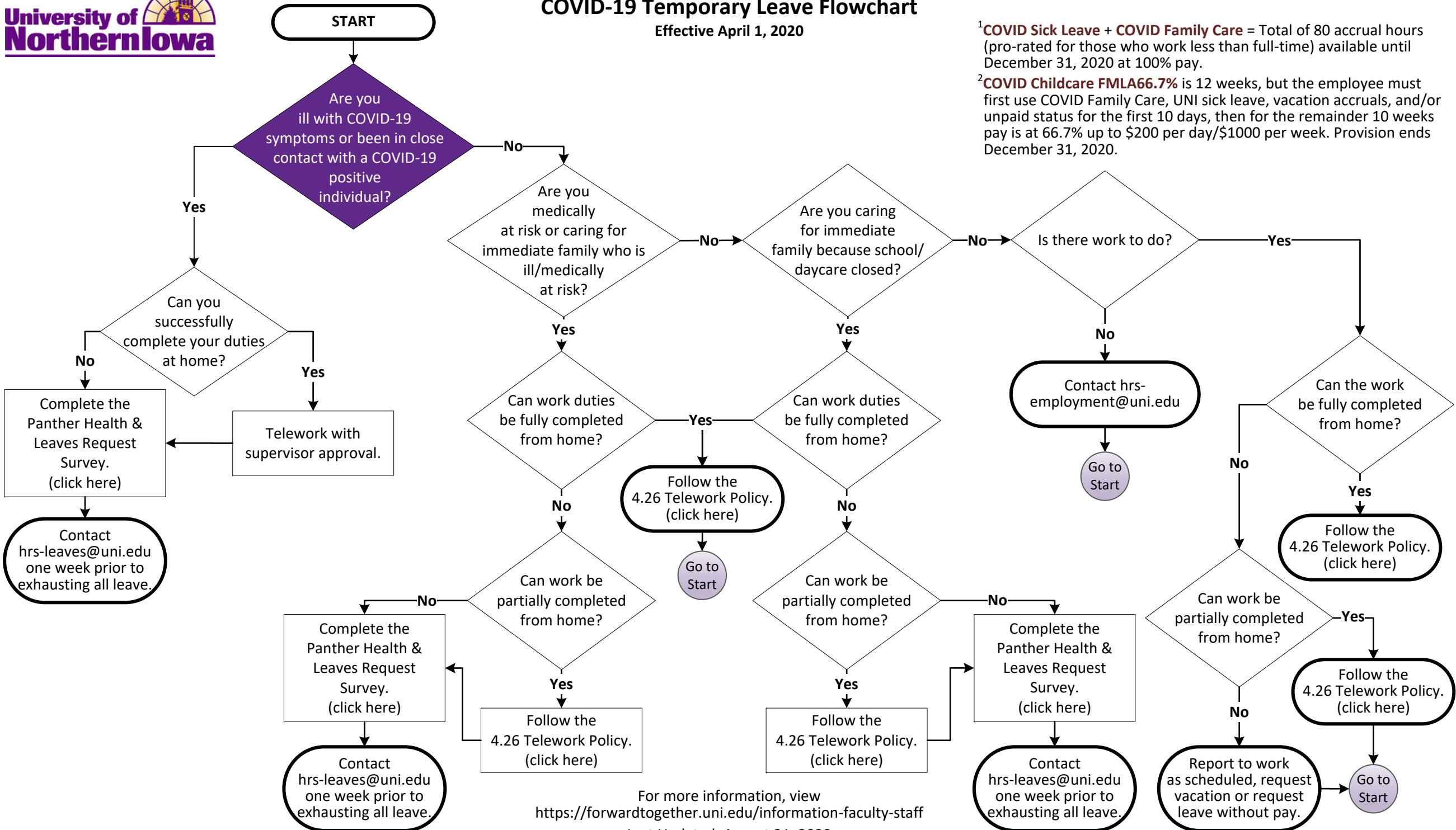


COVID-19 Temporary Leave Flowchart

Effective April 1, 2020

¹COVID Sick Leave + COVID Family Care = Total of 80 accrual hours (pro-rated for those who work less than full-time) available until December 31, 2020 at 100% pay.

²COVID Childcare FMLA66.7% is 12 weeks, but the employee must first use COVID Family Care, UNI sick leave, vacation accruals, and/or unpaid status for the first 10 days, then for the remainder 10 weeks pay is at 66.7% up to \$200 per day/\$1000 per week. Provision ends December 31, 2020.



For more information, view <https://forwardtogether.uni.edu/information-faculty-staff>

Last Updated: August 21, 2020